



**TOTAL CABLE  
SOLUTIONS**

*Servicing Fortune 500 companies  
across the globe for 10 years*

**PRODUCT CATALOG**  
SPRING 2020

**AWARD-WINNING  
PRODUCTS**



**U.S.  
SUPPORT**

Lexie  
Sales Support Manager



SCHEDULE A VISIT FROM THE  
**TOURING TESLA  
MOBILE SHOWROOM**



GREEN CARBON NEUTRAL  
**SHIPPING**



# FIBER OPTIC CABLES

FEATURE | U ELITE™



**Toolless Reversible Polarity**

Never exposes fiber, eliminating risk of breakage

**Color Coding System**

10 colors to help with easy cable identification

**Hyperscale Ready**

Designed for extreme density situations

**Universal LC Elite™  
(MM OM3, OM4, OM5, SM)**

OM4= ULE-4PA2A-xxxM

OM5= ULE-5PL2L-xxxM

SM= ULE-SPY2B-xxxM

**COLOR CODED TRIGGER SYSTEM**



Cutting-edge materials. All fiber optic cables manufactured by Total Cable Solutions are made with leading industry materials including Corning® glass and the lowest loss connectors in the industry.

**Available Connectors**

Universal LC Elite™, SC Uniboot, LC, SC, FC, ST, MTRJ, MTP®/MPO, E2000, MU

**Available Fiber Types**

Corning® Clearcurve™ OM1, OM3, OM4, OM5, 10G OM3, Singlemode



**LC to LC Duplex Zipcord  
(MM OM4)**  
D-L2L2-4P2-xxxM



**LC to SC Duplex Zipcord  
(MM OM4)**  
D-L2S2-4P2-xxxM



**SC to SC Duplex Zipcord  
(MM OM4)**  
D-S2S2-4P2-xxxM



**LC to LC Duplex Zipcord  
(MM OM3)**  
D-L2L2-3R2-xxxM



**LC to SC Duplex Zipcord  
(MM OM3)**  
D-L2S2-3R2-xxxM



**SC to SC Duplex Zipcord  
(MM OM3)**  
D-S2S2-3R2-xxxM



**LC to LC Duplex Zipcord  
(MM OM1)**  
D-L2L2-1R2-xxxM



**LC to SC Duplex Zipcord  
(MM OM1)**  
D-L2S2-1R2-xxxM



**LC to ST Duplex Zipcord  
(MM OM1)**  
D-L2T-1R3-xxxM



**SC to SC Duplex Zipcord  
(MM OM1)**  
D-S2S2-1R2-xxxM



**LC to LC Duplex Zipcord  
(SMF UPC)**  
D-LU2LU2-SR2-xxxM



**LC to SC Duplex Zipcord  
(SMF UPC)**  
D-LU2SU2-SR2-xxxM



**LC to SC Duplex Zipcord  
(SMF UPC)**  
D-LU2TU-SR3-xxxM



**ST to ST Duplex Zipcord  
(SMF UPC)**  
D-TUTU-SR3-xxxM



**LC to LC Duplex Zipcord  
(SMF APC)**  
D-LA2LA2-SR2-xxxM



**LC to SC Duplex Zipcord  
(SMF APC)**  
D-LA2SA2-SR2-xxxM



**SC to SC Duplex Zipcord  
(SMF APC)**  
D-SA2SA2-SR2-xxxM



**LC APC to SC UPC Duplex**  
(SMF Zipcord)  
D-LA2SU2-SR2-xxxM



**SC Uniboot**  
(MM/SMF)



**LC UPC to SC APC Duplex**  
(SMF Zipcord)  
D-LU2SA2-SR2-xxxM



**MTP Elite®**  
(MM OM5)  
QSFP-RPF-5P3-xxxM



**MTP Elite®**  
(MM OM4)  
QSFP-PFPF-4P3-xxxM



**MTP® to LC Fanout/  
Harness Cable**  
(OM4 40G to 10G)  
QSFP-PFUE-4P31-xxxM



**MTP® to MTP® Fanout/  
Harness Cable**  
(OM4 100G to 40G)  
M24-PF3PF-4P31-xxxM



**MDC to MDC  
Duplex/Cable**  
(OM4 MM)  
MDC-4P2-xxxM



**MDC to Universal LC™  
Elite Duplex Cable**  
(OM4 MM)  
MDC-ULE-4PA2A-xxxM



**MDC to MDC  
Duplex Cable**  
(SMF)  
MDC-SP2-xxxM



**MDC to Universal LC™  
Elite Duplex Cable**  
(SMF)  
MDC-ULE-4PA2A-xxxM



**Attenuator (M to F)**  
(Available in LC & SC)  
ATT-L-xx  
ATT-LA-xx  
ATT-LU-xx



**Loopbacks &  
Loopback Attenuators**  
LB-LU2-SR3-HS



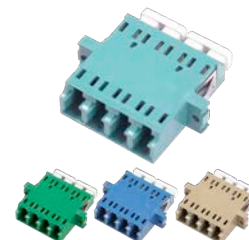
**SC Simplex Adapter**  
(1-Piece Mold)  
TCS-SCSZRF-BL/GN  
TCS-SCSPBF-AQ/BE



**SC Duplex Adapter**  
(1-Piece Mold)  
TCS-SCDZRF-BL/GN  
TCS-SCDPBF-AQ/BE



**LC Duplex Adapter**  
(1-Piece Mold)  
TCS-LCDZRF-BL/GN  
TCS-LCDPBF-AQ/BE



**LC Quad Adapter**  
(1-Piece Mold)  
TCS-LCQZRF-BL/GN  
TCS-LCQPBF-AQ/BE

## FEATURE | MTP PRO®



- Enhanced Performance**  
Mating durability for long life
- Backwards Compatible**  
Fully compatible with MTP® Elite and MPO connections
- Push-Pull Sleeve**  
Push-pull insertion and extraction housing design for ease of use

**MTP PRO®**  
(MM OM3, OM4, OM5)

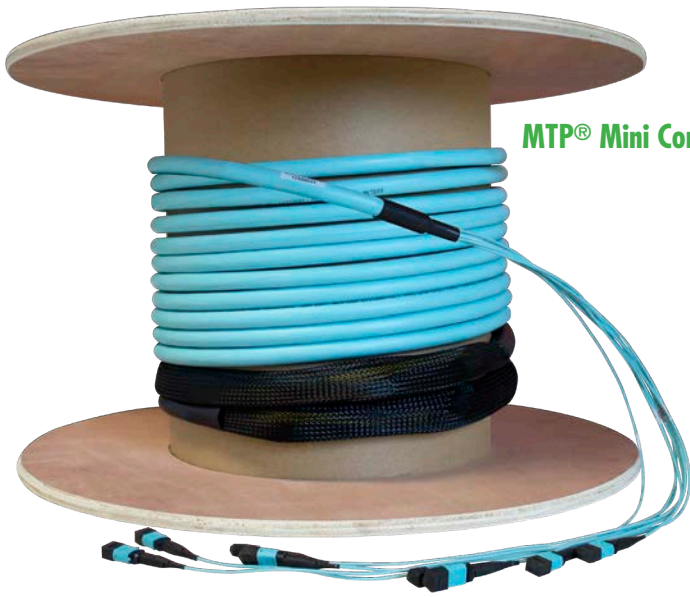


- Reversible Polarity**  
Make polarity changes in the field without exposing fibers (A to B, B to A)
- Easy Pin Changes**  
Add or remove alignment pins with ease without removing the housing (Male to Female, Female to Male)

**MTP PRO® Tool**  
PRO-TOOL-18814

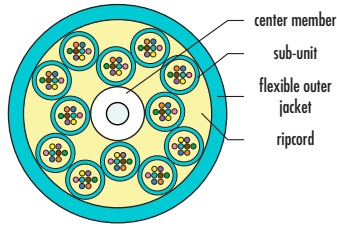


# FIBER TRUNKS



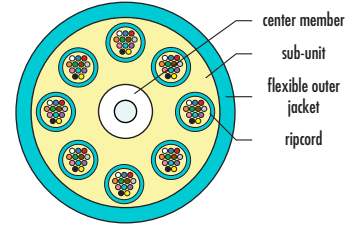
**MTP® Mini Core Trunks**

## BASE-8



- Optimized for 2 and 8-fiber transceiver technologies
- 100% fiber utilization for 8-fiber transceiver systems

## BASE-12



- High connector fiber density
- Larger number of fibers installed quickly

### How to choose?

The usage of 40G and 100G transmission will be the key deciding factor. As a greater number of 40G and 100G circuits are deployed the benefits of matching the fiber count in the MTP backbone with the fiber count of the transceiver outweighs the density benefit of Base-12 connectivity.



**BIF**  
BEND INSENSITIVE FIBER

**TCS Slim Trunk**  
(SMF or MM)



**BIF**  
BEND INSENSITIVE FIBER

**Universal LC Elite™ Trunks**  
(SMF or MM)



**BIF**  
BEND INSENSITIVE FIBER

**Armored Trunks**  
(SMF or MM)



**BIF**  
BEND INSENSITIVE FIBER

**Indoor/Outdoor Trunks**  
(Available sizes: 2, 6, 12, 24, 48, 72, 96 & 144 fiber)

**FEATURE | OPTIMUS™**



Designed to easily transform your connections from QSFP28 (100G) to SFP28 (25G) or QSFP (40G) to SFP (10G) speeds. A truly cost-effective, plug-n-play system to simplify deployment.

**QSFP Distribution Panel**  
(SMF or MM)  
QSFP-DPAN-48ML-OM4



#### Purpose Built

Breaks out QSFP connections to individual SFP connections

#### Cost Effective

Eliminates the need to use individual QSFP cassettes

#### Plug-n-Play

Pre-configured for quick and easy deployment

**LC Patch Panel**  
PAN-48ML-OM4



#### Highly Adaptive

Provides a wide variety of configurations for your patching needs

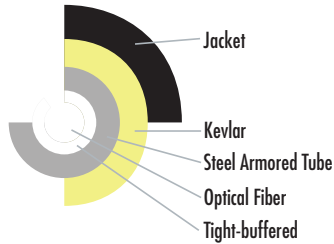
#### Cost Effective

Simple rackmount design eliminates the need for individual cassettes

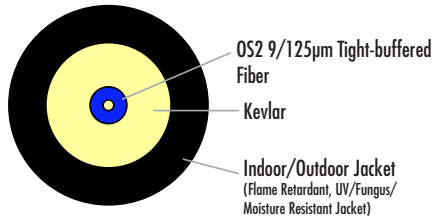
#### Hyperscale Ready

Scalable solution for port breakout, replication or pass through

# FEATURE | INDOOR/OUTDOOR FIBER OPTIC CABLES

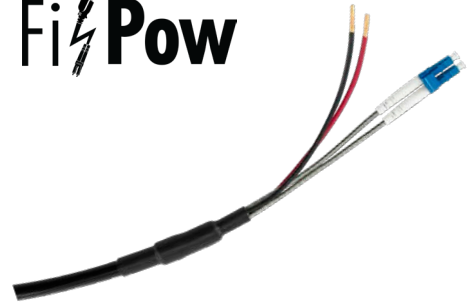


**Micro-Armored Patch Cable**  
(SMF)  
S-SA1SA1-SM13U-xxxM



**Ruggedized Patch Cable**  
(SMF)  
S-SA1SA1-SR13U-xxxM

**FiPow**



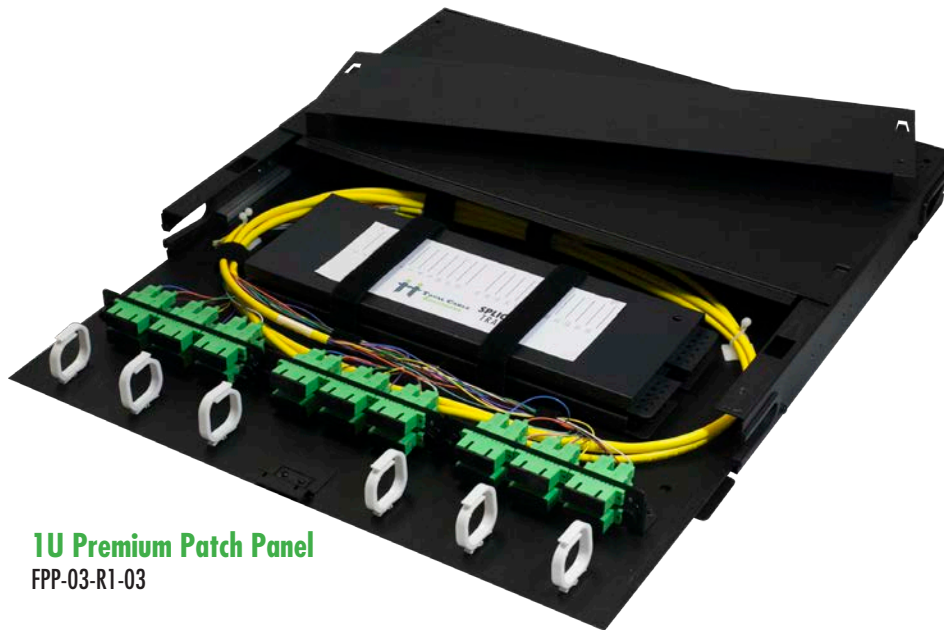
Designed for long distance/high power.

**FiPOW Indoor/Outdoor Hybrid Cable**  
(Fiber with copper conductors)



**OSP FTTx Drop Cables/OptiTap® Compatible**  
MST-SA1SA1-SRIU-xxxM

## FIBER ENCLOSURES



**1U Premium Patch Panel**  
FPP-03-R1-03

Constructed from premium grade steel, Total Cable Solutions' Premium patch panels are designed for performance and high density.

- Available pre-terminated (pictured)
- Loaded panels include adapters and adapter plates
- Pre-Terminated panel includes adapter panels, splice trays, and pigtails to meet your project needs.
- MTP®/MPO cassettes available custom-built (usually ships within 24-48 hrs)
- Same day shipping may be available upon request
- Delivered ready to splice



**2U Premium Patch Panel**  
FPP-06-R2-04



**3U Premium Patch Panel**  
FPP-09-R3-05



**4U Premium Patch Panel**  
FPP-12-R4-06



**8U Premium Patch Panel**  
FPP-24-R8-07



**Choice Patch Panel**  
FPP-03-R1-23

**Choice 1 LGX Wallmount Panel**  
FPP-01-W-10

\*Pictured with optional heat-resistant splice chip and compression grommet (sold separately)



**Splicing Capability**

Holds up to 2 plastic 12-fiber splice trays or save money and use included splice chip for easy patch and splice

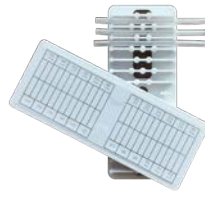
**Grommeted Non-captive Entry Ports**

Protects cables from sharp edges and makes future moves, adds and changes easier

**Easy Release Latches**

Quickly open panel doors in a crowded rack

**FEATURE**



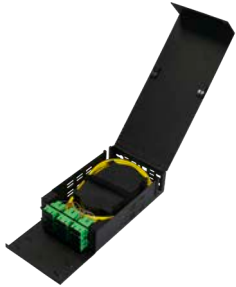
**Heat-Resistant Splice Chip**  
ST-PASD-24

**Installing in a hot climate?**

Our enhanced splice chip is designed for extreme climates and screws down for a secure connection.



**Compression Grommet**  
CF-B



**Choice 2 LGX Wallmount**  
FPP-02-W-18

**Choice 4 LGX Wallmount**  
FPP-04-W-19

**Outdoor FTTx 6 Fiber**  
FPP-6S-W-15

**Outdoor Enclosure**  
FPP-12S-W-16

**SlimFIT™ FTTx Enclosure**  
FPP-01-W-35

**FEATURE | FIBERGLASS ENCLOSURE**



**OUTDOOR FIBER DISTRIBUTION TERMINAL**



FPP-05-W-67



Internal Weather Stripping



Padlockable Latches



Customized for your application

**Tough Fiberglass**

Designed for extreme climates, NEMA 4x, and IP66 rated

**Secure**

Padlockable latches to secure contents

**Fast Deployment**

Multiple configurations for splicing, patching, and patching for fast FTTx deployment



**CORE™ SERIES**

Total Cable Solutions Core™

Wallmount Enclosures are the new standard in access. The removable inner core allows for table-level adds and changes. Locking enclosure has dual hinges for easy access.



◀ Removable inner core allows for table-level access for patching, cleaning and organization



**TCS Core™**  
Wallmount Enclosure  
FPP-06-W-21

**TCS Core™ Twin**  
Wallmount Enclosure  
FPP-02-W-31

Dual Hinged Locking Enclosure

Grommeted Non-captive Entry

Installed Bubble Level

**FIBER ENCLOSURES | SPLICING**



**12 Fiber Splice Tray**  
(Plastic)  
ST-PA-12



**24 Fiber Splice Tray**  
(Plastic)  
ST-PA-24



**12 Fiber Splice Tray**  
(Metal)  
ST-M-12



**24 Fiber Splice Tray**  
(Metal, 12in.)  
ST-M-24



**24 Fiber Splice Tray**  
(Metal, 8in.)  
ST-M-24-8



**36 Fiber Splice Tray**  
(Metal)  
ST-M-36



**40mm Single Fusion**  
(Splice Sleeves)  
ST-FPS-40MM-50

**60mm Single Fusion**  
(Splice Sleeves)  
ST-FPS-60MM-50

**40mm Ribbon**  
(Splice Sleeves)  
ST-RPS-40MM-50

**FIBER | CLEANERS**



**LC/MU Fiber Cleaner**  
500+ Cleanings  
FOC-LC-OC



**SC/ST/FC Fiber Cleaner**  
500+ Cleanings  
FOC-SC-OC



**MTP®/MPO Fiber Cleaner**  
600+ Cleanings  
FOC-MPO-P

**FIBER | CASSETTES**

Base 24, 12 & 8 Available



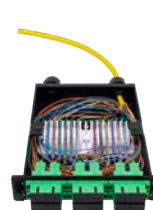
**HDA Cassettes**  
(Panduit® compatible\*)  
FPP-CS-PM2L2-OM4-24-HDA



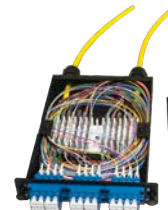
**LGX Cassettes**  
(Standard LGX size)  
FPP-CS-PML2S-OM4-24



**CCH™ Cassettes**  
(Corning® CCH™ Compatible\*)  
FPP-CS-PM2L2-OM4-24-CCH



**SC LGX Splice Cassettes**  
(Custom made to fit your application)



**LC LGX Splice Cassettes**  
(Custom made to fit your application)

## FIBER | PIGTAILS



**OM3 900µm Pigtail**  
(Simplex)  
S-x1BL-3RW9-xxxM



**OM1 900µm Pigtail**  
(Simplex)  
S-x1BL-1RW9-xxxM



**Singlemode 900µm Pigtail**  
(Simplex)  
S-xx1BL-SRW9-xxxM



**6 Fiber OM4 Pigtail**  
(900 µm)  
T6-x119-BL-4RD-xxxM



**6 Fiber OM1 Pigtail**  
(900 µm)  
T6-x119-BL-1RD-xxxM



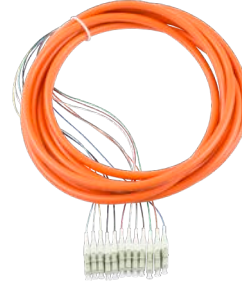
**6 Fiber SMF Pigtail**  
(900 µm)  
T6-xx119-BL-SPD-xxxM



**12 Fiber OM4 Pigtail**  
(900 µm)  
T12-x119-BL-4RD-xxxM



**12 Fiber OM3 Pigtail**  
(900 µm)  
T12-x119-BL-3RD-xxxM



**12 Fiber OM1 Pigtail**  
(900 µm)  
T12-x119-BL-1RD-xxM



**12 Fiber SMF Pigtail**  
(900 µm) Ribbon or Distribution  
T12-xx119-BL-SPR-xxxM  
T12-xx119-BL-SPD-xxxM

## DIRECT ATTACH & ACTIVE OPTICAL CABLES

DAC and AOC cables by Total Cable Solutions are available in custom sizes and colors. Many lengths and form factors in stock for fast shipping. Custom lengths, colors etc. generally ship within 10 days.



**SFP+ Direct Attach Cable**  
(10G SFP)  
SFP-10G-SFP-xxxM



**QSFP+ Direct Attach Cable**  
(40G QSFP)  
QSFP-40G-QSFP-xxM



**SFP28**  
(25G)  
SFP28-25G-SFP28-xxM



**QSFP28**  
(100G)  
QSFP28-100G-QSFP28-xxM



**QSFP+ to 4xSFP**  
(40G to 4x10G)  
QSFP-40G-4SFP-xxM



**QSFP+ AOC Cable**  
(40G)  
AOC-QSFP-40G-xxxM



**QSFP28 AOC Cable**  
(100G)  
AOC-QSFP28-100G-xxxM



## FIBER OPTIC SPLITTERS

Fabricated using silica optical waveguide technology to distribute optical signals accurately and evenly with minimal loss providing a low-cost light distribution solution with small form factor and high reliability.



**1x16 RACKMOUNT PLC SPLITTER**  
FS-116-SA1-R



**1x32 RACKMOUNT PLC SPLITTER**  
FS-132-SA1-R



**2x32 RACKMOUNT PLC SPLITTER**  
FS-232-SA1-R



**LGX 1x4 PLC SPLITTER**  
FS-104-SA1



**LGX 1x8 PLC SPLITTER**  
FS-108-SA1



**LGX 1x16 PLC SPLITTER**  
FS-116-SA1



**LGX 2x16 PLC SPLITTER**  
FS-216-SA1



**LGX 1x32 PLC SPLITTER**  
FS-132-SA1

### FEATURE | INLINE SPLITTERS

Total Cable Solutions' Inline Splitters are ideal for EPON, GPON & FTTH/FTTx applications



**ABS Box Splitter**



**Ruggedized Splitter**

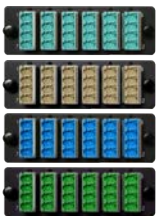


**Small-form PLC Splitter**  
Available terminated or unterminated  
1x2, 1x4, 1x8, 1x16 & 1x32



**LGX 2x32 PLC SPLITTER**  
FS-232-SA1

## ADAPTER PANELS - HDA (PANDUIT® COMPATIBLE)



**Premium LC 24 Fiber**  
(with Internal Shutters)  
FPP-AD-LxQS-06-A



**SC 12 Fiber**  
FPP-AD-Sx2-06-A



**LC 24 Fiber**  
FPP-AD-LxQ-06-A



**MTP® Pass-through**  
FPP-AD-Mx2-06-A



**HDA BLANK**



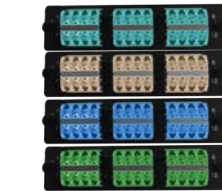
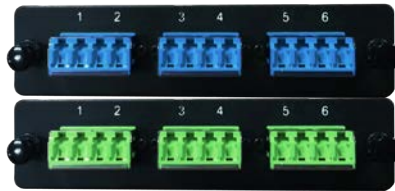
**HDA KEYSTONE**

**HDA BLANK | KEYSTONE**  
HDA-BLANK  
HDA-4-KEY(Empty)  
FPP-AD-4BK-04-A(CAT6)

# ADAPTER PANELS - LGX



**Premium LC 12 Fiber**  
(with Internal Shutters)  
FPP-AD-LxQS-03



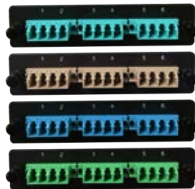
**Premium LC 24 Fiber**  
(with Internal Shutters)  
FPP-AD-LxQS-06



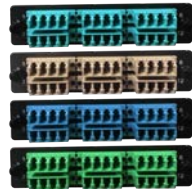
**Premium LC 12 Fiber**  
(with Internal Shutters)  
FPP-AD-Lx2S-06



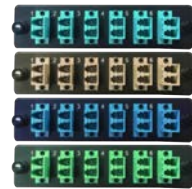
**Premium LC 16 Fiber**  
(with Internal Shutters)  
FPP-AD-Lx2S-08



**Choice LC 12 Fiber**  
(Choice/No shutters)  
FPP-AD-LxQ-03



**Choice LC 24 Fiber**  
(Choice/No shutters)  
FPP-AD-LxQ-06



**Choice LC 12 Fiber**  
(Choice/No Shutters)  
FPP-AD-Lx2-06



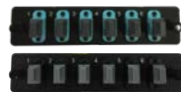
**LC 16 Fiber**  
(Choice/No Shutters)  
FPP-AD-Lx2-08



**MTP® 12-Port**  
(Duplex)  
FPP-AD-Mx2-03



**MTP® 24-Port**  
(Duplex)  
FPP-AD-Mx2-06



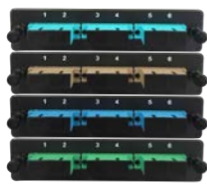
**MTP® 6-Port**  
(Simplex)  
FPP-AD-Mx1-06



**MTP® 8-Port**  
(Simplex)  
FPP-AD-Mx1-08



**Keystone Plate**  
FPP-AD-6BK-06



**SC 6 Fiber**  
(3x Duplex)  
FPP-AD-Sx2-03



**SC 12 Fiber**  
(6x Duplex)  
FPP-AD-Sx2-06



**SC 6 Fiber**  
(6x Simplex)  
FPP-AD-Sx1-06



**SC 8 Fiber**  
(8x Simplex)  
FPP-AD-Sx1-08



**ST 6 Fiber**  
(SMF or MM)  
FPP-AD-Tx1-06



**ST 12 Fiber**  
(SMF or MM)  
FPP-AD-Tx1-12



**FC 6 Fiber**  
(SMF or MM)  
FPP-AD-Fx1-06



**FC 12 Fiber**  
(SMF or MM)  
FPP-AD-Fx1-12

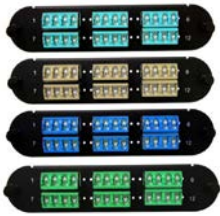


**CCH™ Converter Plates**  
(Converts LGX to Corning® CCH)  
FPP-AD-CCH



**LGX Blank**  
FPP-AD-BLANK

## ADAPTER PANELS - CORNING® COMPATIBLE



**Premium LC 24 Fiber**  
(with Internal Shutters)  
FPP-AD-LxQS-06-C



**Premium LC 12 Fiber**  
(with Internal Shutters)  
FPP-AD-LxQS-03-C



**MTP® 12-Port**  
(Duplex)  
FPP-AD-Mx2-06-C



**MTP® 6-Port**  
(Duplex)  
FPP-AD-Mx2-03-C



**Choice LC 24 Fiber**  
(No Internal Shutters)  
FPP-AD-LxQ-06-C



**Choice LC 12 Fiber**  
(No Internal Shutters)  
FPP-AD-Lx2-03-C



**SC 12 Fiber**  
(6 Duplex)  
FPP-AD-Sx2-06-C



**SC 6 Fiber**  
(3 Duplex)  
FPP-AD-Sx2-03-C

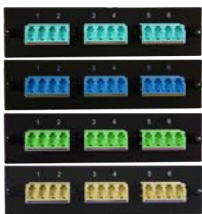


**FC 12 Fiber**  
FPP-AD-Fx1-12-C

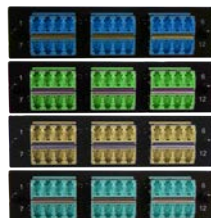


**ST 12 Fiber**  
FPP-AD-Sx1-12-C

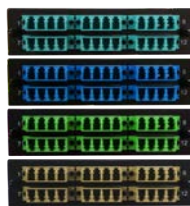
## ADAPTER PANELS - LEVITON® COMPATIBLE



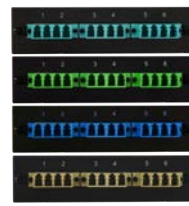
**Premium LC 12 Fiber**  
(with Internal Shutters)  
FPP-AD-LxQS-03-L



**Premium LC 24 Fiber**  
(with Internal Shutters)  
FPP-AD-LxQS-06-L



**Choice LC 24 Fiber**  
(No Internal Shutters)  
FPP-AD-LxQ-06-L



**Choice LC 12 Fiber**  
(No Internal Shutters)  
FPP-AD-Lx2-03-L



**MTP® 12-Port**  
(Duplex)  
FPP-AD-Mx2-06-L



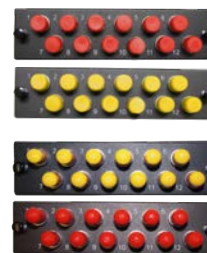
**MTP® 6-Port**  
(Duplex)  
FPP-AD-Mx2-03-L



**SC 6 Fiber**  
(3 Duplex)  
FPP-AD-Sx2-03-L



**SC 12 Fiber**  
(6 Duplex)  
FPP-AD-Sx2-06-L



**FC 12 Fiber**  
FPP-AD-Fx1-12-L

**ST 12 Fiber**  
FPP-AD-Sx1-12-L



**Leviton® Compatible Blank**  
FPP-AD-BLANK-LV



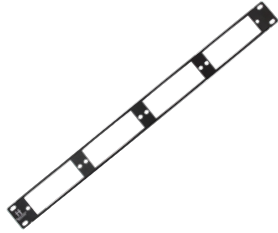
## BULKHEADS

Total Cable Solutions provides a wide range of bulkheads, supporting a variety of patching needs. All of our bulkheads are constructed of quality steel and offer the following:

- Silk-screened with port numbers for easy identification
- Low profile for cost-effective and easy-to-use patching



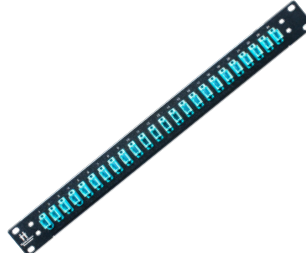
**LGX Bulkhead**  
FPP-03-R1-24



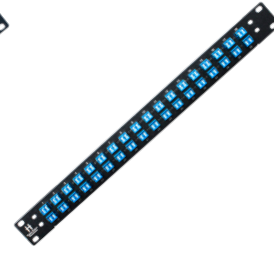
**HDA Bulkhead**  
(Panduit® Compatible\*)  
FPP-04H-R1-14



**18 Port Bulkhead**  
(Available in SC only)  
FP-18SS-xxx



**24 Port Bulkhead**  
FP-24LL-xxx (LC)  
FP-24SS-xxx (SC)  
FP-24MM-xxx (MTP®)



**36 Port Bulkhead**  
FP-36LL-xxx (LC)  
FP-36SS-xxx (SC)  
FP-36MM-xxx (MTP®)



**48 Port Bulkhead**  
FP-48LL-xxx (LC)  
FP-48MM-xxx (MTP®)

## POWER - COLORED POWER CABLES

Data center grade ultra-flexible power cords in vibrant colors to identify critical devices. Pure copper conductor core for maximum pliability. 1 ft to 15 ft lengths available. UL Listed and RoHS compliant.



**C14 to C13 (10 Amp)**  
PWR-34VL-12xx-yyyF



**C14 to C15/C13 (15 Amp)**  
PWR-54JL-52xx-yyyF



**C20 to C19 (20 Amp)**  
PWR-90JL-02xx-yyyF



**NEMA 5-15P to C13 (10 Amp)**  
PWR-3PVL-11xx-yyyF

### FEATURE | P-LOCK™



**C14 to C19 (15 Amp)**  
PWR-94JL-52xx-yyyF



**C20 to C13 (15 Amp)**  
PWR-30JL-52xx-yyyF



**C20 to C21 (20 Amp)**  
PWR-10JL-02xx-yyyF



**C14 to C13 (10 Amp)**  
PWR-3FVL-12xxx-yyyF



**C14 to C15 (15 Amp)**  
PWR-5FJL-52xx-yyyF



**C14 to C19 (20 Amp)**  
PWR-9TJL-02xx-yyyF



**C20 to C13 (15 Amp)**  
PWR-3TJL-52xx-yyyF



**C20 to C19 (20 Amp)**  
PWR-9TJL-02xx-yyyF



**SureFIT™ C14**  
(Locking Sleeve)  
SUREFIT-C14(-YE)



**SureFIT™ C13**  
(Locking Sleeve)  
SUREFIT-C13(-YE)



**SureFIT™ C20**  
(Locking Sleeve)  
SUREFIT-C20



**SureFIT™ C19**  
(Locking Sleeve)  
SUREFIT-C19



**5-15P to C14 Adapter**  
PWR-C14-515R

**CABINETS, RACKS & ACCESSORIES**

Designed for hyperscale data centers and constructed of industry grade steel, our racks and cabinets are available preconfigured with everything from PDUs, cable management, and patching.



**42U SERVER CABINET**  
(42" Depth)  
RCK-SC-42U-B-01



**WALL MOUNT CABINET**  
(Available Sizes: 9U, 12U, 15U,  
and 18U)  
RCK-WES-xxU-B-01

**TCS Choice** *Cabinets & Racks*



**PIVOT WALL RACK**  
(Available Sizes: 12U, 20U,  
24U, and 32U)  
RCK-WP-xxU-B-01



**2-POST RACK**  
(Available Sizes: 24U,  
44U, and 48U)  
RCK-2P-xxU-B-01



**2-POST RACK  
CABLE MANAGER**  
(Available Sizes: 24U,  
44U, and 48U)  
RCK-2P-xxU-B-VRCM



**1U Hinged Bracket**  
HB1



**2U Hinged Bracket**  
HB2



**3U Hinged Bracket**  
HB3



**4U Hinged Bracket**  
HB4



**6U Hinged Bracket**  
HB6

**PREMISE CABLING - NETWORK CABLES**

**ProFIT™ Ultra™**  
Premium Copper Cables



**ProFIT™ Ultra**  
(24/26 AWG Cat.6/Cat.6a)



**ProFIT™ Ultra Slim™**  
Premium Copper Cables



**ProFIT™ Ultra Slim**  
(28 AWG Cat.6/Cat.6a)



**TCS Choice Slim™**



**TCS Choice Slim**  
(28AWG Cat.6/Cat.6a)



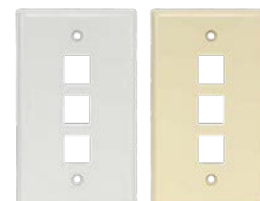
**TCS Choice Copper**



**TCS Choice Copper**  
(Cat.5e/Cat.6/Cat.6A)



## COPPER | PREMISE CABLING - ACCESSORIES



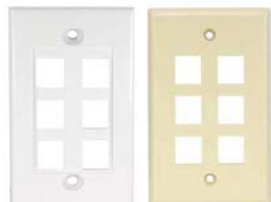
**1 Port Surface Mount Box**  
PRO-SMB-KEY-1-xx

**2 Port Surface Mount Box**  
PRO-SMB-KEY-2-xx

**1 Port Face Plate  
(Single Gang)**  
PRO-FP-KEY-1-xx

**2 Port Face Plate  
(Single Gang)**  
PRO-FP-KEY-2-xx

**3 Port Face Plate  
(Single Gang)**  
PRO-FP-KEY-3-xx



**4 Port Face Plate  
(Single Gang)**  
PRO-FP-KEY-4-xx

**6 Port Face Plate  
(Single Gang)**  
PRO-FP-KEY-6-xx

## PREMISE CABLING - NETWORK PATCH PANELS



**ProFIT™ 12 Port Panel**  
(110 Block, Punch-down)  
PRO-CPP-12-CAT5E-WALL  
PRO-CPP-12-CAT6-WALL

**ProFIT™ 24 Port Panel**  
(110 Block, Punch-down)  
PRO-CPP-24-CAT5E-19  
PRO-CPP-24-CAT6-19

**ProFIT™ 48 Port Panel**  
(110 Block, Punch-down)  
PRO-CPP-48-CAT5E-19  
PRO-CPP-48-CAT6-19

## FEATURE | ProFIT™ PATCH PANELS

### ProFIT™ Patch™ Premium Copper Panels



**ProFIT™ 48 Port Angled  
(Keystone Panel)**  
PRO-CPP-BLANK-1U-48V

### ProFIT™ Rapid Termination Tool



PRO-KEY-TOOL  
PRO-KEY-DIE

#### Cable Management

Built-in rear cable management designed for hyperscale extreme density

#### Standard-Size Jacks

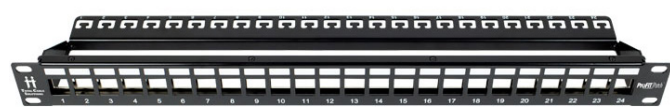
Designed for standard-size, non-proprietary keystone jacks

#### Port Labeling

Silk-screened labeling on front and back cable management for quick port identification

#### Flush Fit

Keystone jacks fit flush into ports to protect them from damage



**ProFIT™ 24 Port  
(Keystone Panel)**  
PRO-CPP-BLANK-1U-24



**ProFIT™ 48 Port  
(Keystone Panel)**  
PRO-CPP-BLANK-1U-48



# FEATURE | ProFIT™ KEYSTONE JACKS



**ProFIT™ Cat.6a**  
(Keystone Jack)  
PRO-KEY-AP-x-25



**ProFIT™ Cat.6**  
(Keystone Jack)  
PRO-KEY-6P-x-25



**ProFIT™ Cat.5e**  
(Keystone Jack)  
PRO-KEY-5P-x-25

AVAILABLE COLORS:



Component-Level Performance

Standard Industry Size

Rapid Installation

Backwards Compatible



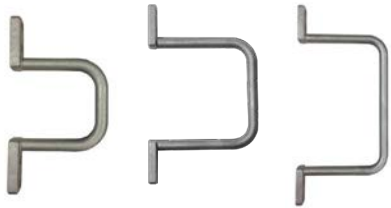
For maximum signal integrity

Fits in standard-size keystone panels, faceplates, and surface mount boxes

Reduces termination speed almost 90% using ProFIT Rapid Termination tool

Interoperable and backwards compatible with CAT5 and CAT3

## CABLE MANAGEMENT



**Distribution Rings**

**2"**  
DSTR-2

**3"**  
DSTR-3

**5"**  
DSTR-5



**1U Horizontal Cable Manager**

PRO-CBL-MGR-1U-5PR



**2U Horizontal Cable Manager**

PRO-CBL-MGR-2U-5PR



**1UV Horizontal Cable Manager**

PRO-CBL-MGR-1UV-4PR



**1U Duct - Single**  
(Horizontal Cable Manager)  
CBL-MGR-1U-2



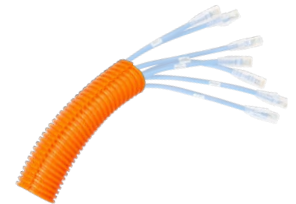
**1U Duct - Double**  
(Horizontal Cable Manager)  
CBL-MGR-1U-24



**2U Duct - Single**  
(Horizontal Cable Manager)  
CBL-MGR-2U



**3/4" Slit Innerduct**  
(Black/Vinyl)  
CLT-1F-D2



**1.5" Slit Innerduct**  
(Orange/Plenum)  
CLT-1F-D3



**Universal Ring Manager**  
MET-1U-UM



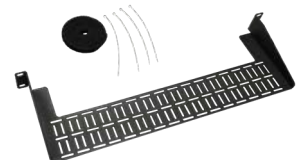
**Side Cable Manager**  
MET-1U-SM



**Plastic Twist Lock**  
(Self-adhesive clip)  
CBL-MGR-PTT-0.251

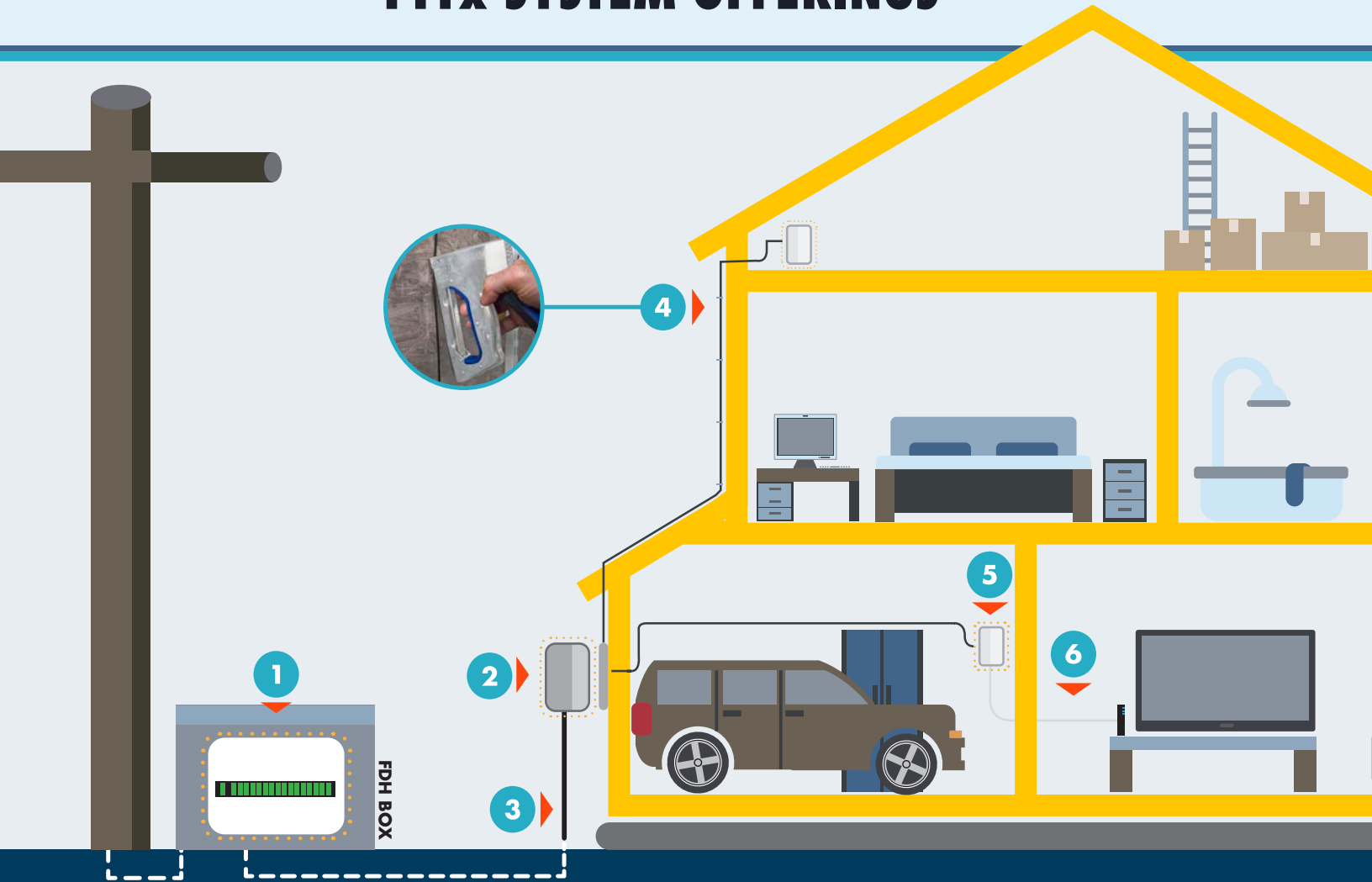


**Rolled Velcro®**  
GT. 75X9000



**Lacing Shelf**  
(Attaches to rear of bulkhead)  
CBL-MGR-1U-SHELF

# FTTx SYSTEM OFFERINGS



## 1 FIBER OPTIC SPLITTERS

- Available in LGX, Rackmount and Inline formats
- Designed for high density cabling environment
- Silk screened port number for easy identification
- Fits standard distribution or network cabinet



## 2 FIBER DISTRIBUTION TERMINAL

- Accommodates select PLC splitters or loaded fiber pigtailed using fusion splicing
- Constructed of the highest quality industrial plastic
- Designed for the harshest outdoor elements, IP65
- Aesthetic appearance includes a glossy finish
- Suitable for wall mounting to building
- Optional company logo silk screening available



## 3 OSP FTTx DROP CABLE

- OptiTap® Compatible\*
- Ruggedized SC APC & SC UPC connectors available
- Designed for direct burial, duct, & self-supporting installations
- Water Blocking Aramid Yarn
- Custom lengths, ships in 2-3 days
- Flat Drop cable style available



## 4 INDOOR/OUTDOOR RUGGEDIZED PATCH CABLE

- Corning® Clearcurve™ SMF-28 Ultra BIF
- Ruggedized, designed to install with staples
- Meets water penetration requirements of Telcordia GR-20-CORE
- Passed Verizon TPR 9424 Issue 2 60 staple test
- Custom lengths, ships in 2-3 days



## 5 SLIMFIT™ CUSTOMER CONNECTION POINT

- Aesthetic appearance includes a white gloss finish
- Suitable for indoor use in residence or office
- Easily store excess cable inside enclosure or outlet
- Fast installation. Mounts directly single gang low-voltage bracket or outlet box.



## 6 FIBER DEPLOYMENT PATCH CABLE

- SC APC to SC UPC Corning® Clearcurve™ SMF-28 Ultra BIF
- Available in brilliant white for in-home aesthetic
- Fiber keystone jack & wall plate available

